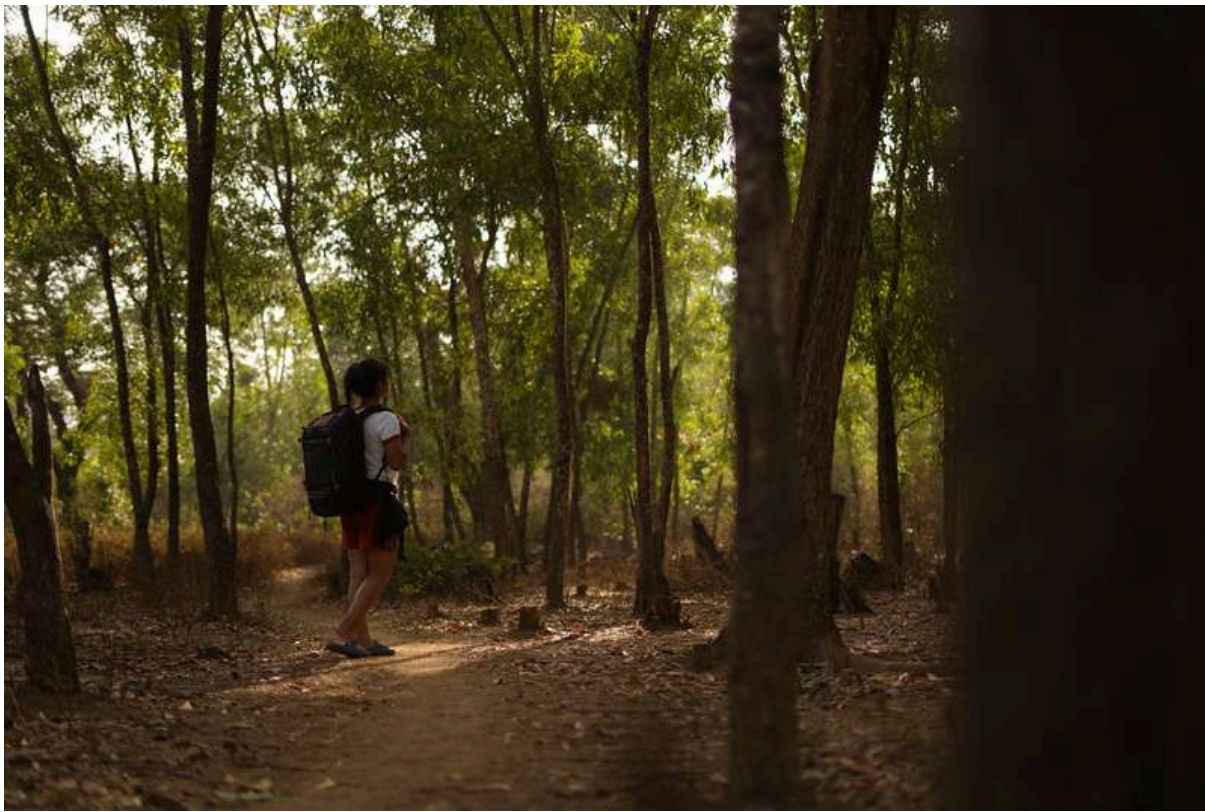


CREPEGINGER  
IS NOT A BRAND.  
IT IS A HOME.

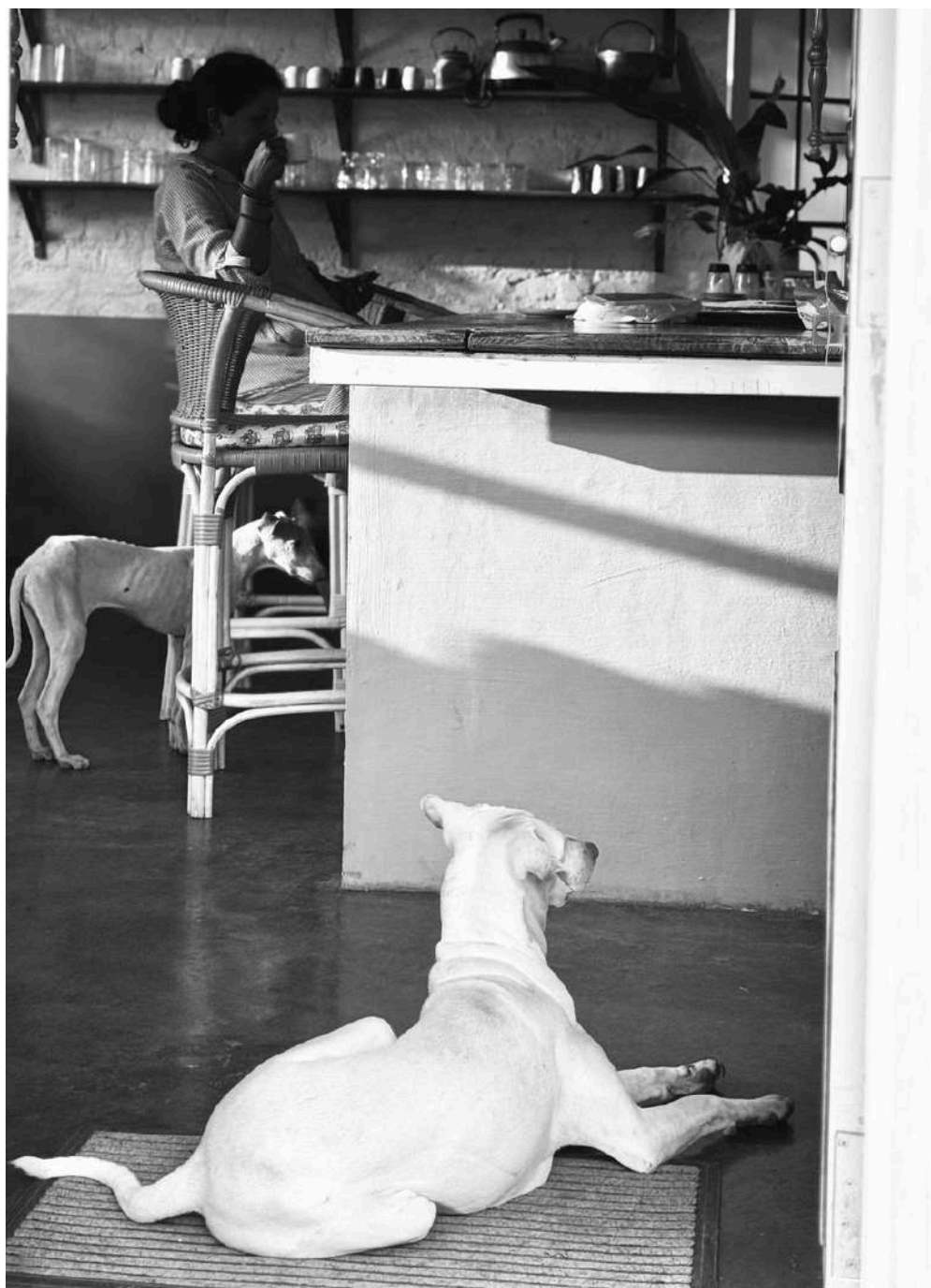




BEFORE HOMESTAYS BECAME  
CONCEPTS, WE LIVED THIS WAY. SIMPLE,  
HANDMADE, FILLED WITH CARE. A  
HOME KEPT OPEN FOR THOSE WHO  
**SEEK PAUSE.**



HERE, FOOD IS NOT A MENU. IT IS MEMORY,  
WARMTH, AND THE HEART OF A HOLIDAY.







A STREAM RUNS THROUGH, BIRDS CALL AT  
DAWN, THE FOREST LINGERS AROUND US.  
THIS IS WHERE THE PAUSE LIVES



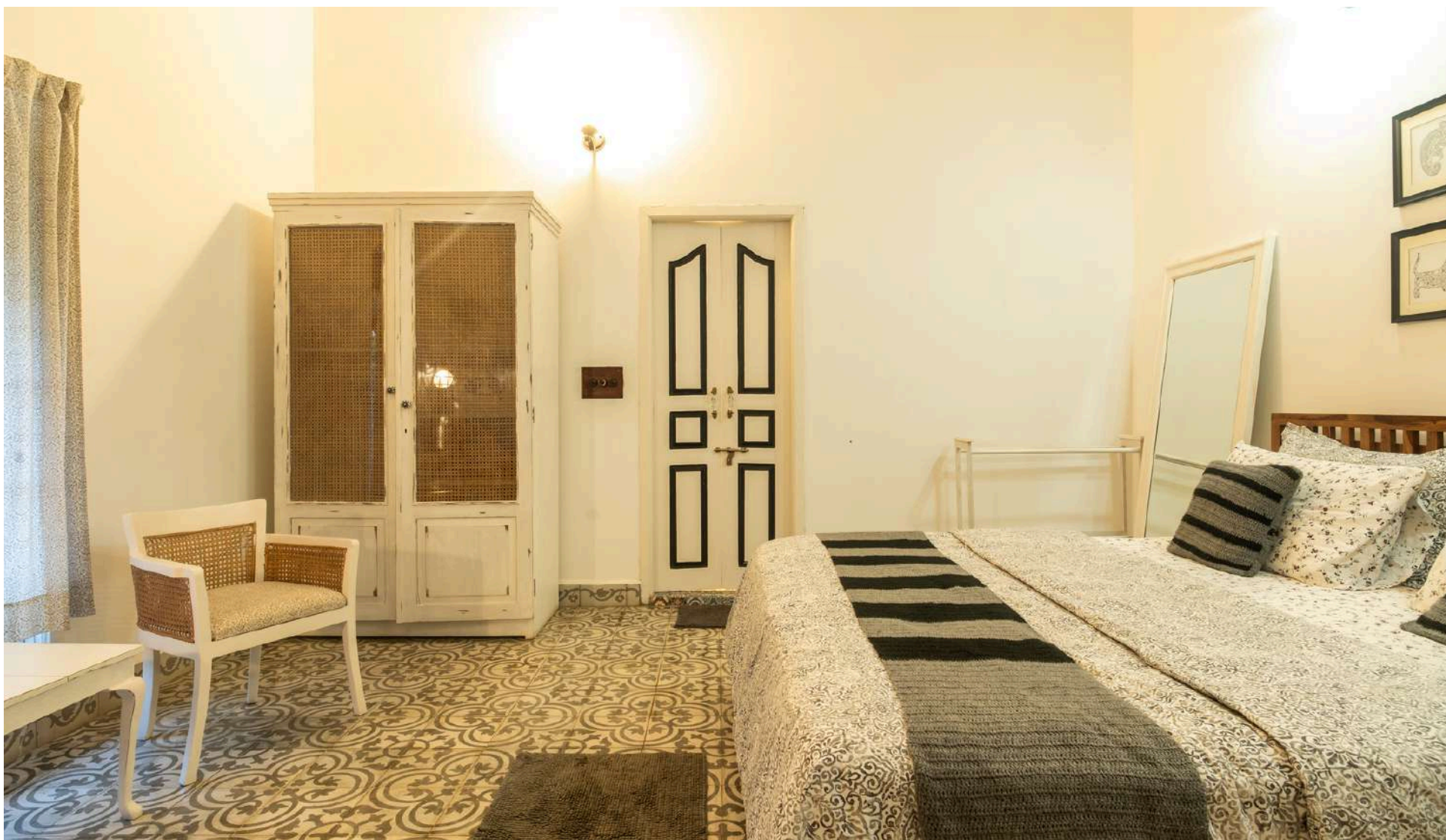
CREPEGINGER IS NOT CURATED FOR YOU. IT IS  
LIVED IN, WITH YOU.





## THE HAVEN OF LOVE- LUXURY ROOM

This room carries the aura of love. A reminder that happiness is a choice, and love has the power to heal and bring meaning to life. Every corner of this space invites you to pause, feel, and reconnect—with yourself and with those around you. Let compassion and warmth take priority here, and allow the room to embrace you in its gentle glow..



### STAY DETAILS

- Each room accommodates up to 3 adults or 2 adults + 1 child (under 12).
- For 3 adults, an extra bed will be provided at an additional cost.
- One child under 6 years can stay in their parents' room with an extra bed at no charge.
- Price shown is for the entire stay and includes Wi-Fi and breakfast.

PRICE: ₹7500 PER NIGHT FOR DOUBLE OCCUPANCY  
EXTRA ADULT ₹3000 PER NIGHT  
EXCLUSIVE OF TAX.



## EGO – THE ROOM OF VASTNESS.

This room holds space as vast as the self can be.  
Ego, when seen with clarity, is not a burden but a mirror.  
Rest here, and discover the beauty of growth in openness.



### STAY DETAILS

- Each room accommodates up to 3 adults or 2 adults + 1 child (under 12).
- For 3 adults, an extra bed will be provided at an additional cost.
- One child under 6 years can stay in their parents' room with an extra bed at no charge.
- Price shown is for the entire stay and includes Wi-Fi and breakfast.

PRICE: ₹8500 PER NIGHT FOR DOUBLE OCCUPANCY  
EXTRA ADULT ₹3000 PER NIGHT  
EXCLUSIVE OF TAX.



## FEELING – THE ROOM OF INTUITION

This room is about opening to thoughts and emotions.  
When we truly feel—our gut, our intuition—we step closer to truth.  
Let this space remind you that feeling is not weakness, but clarity.



### STAY DETAILS

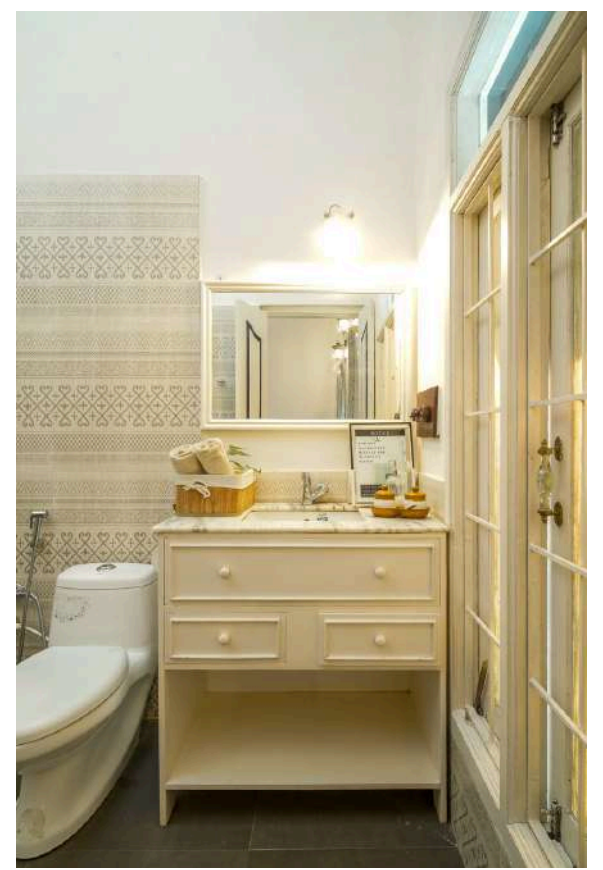
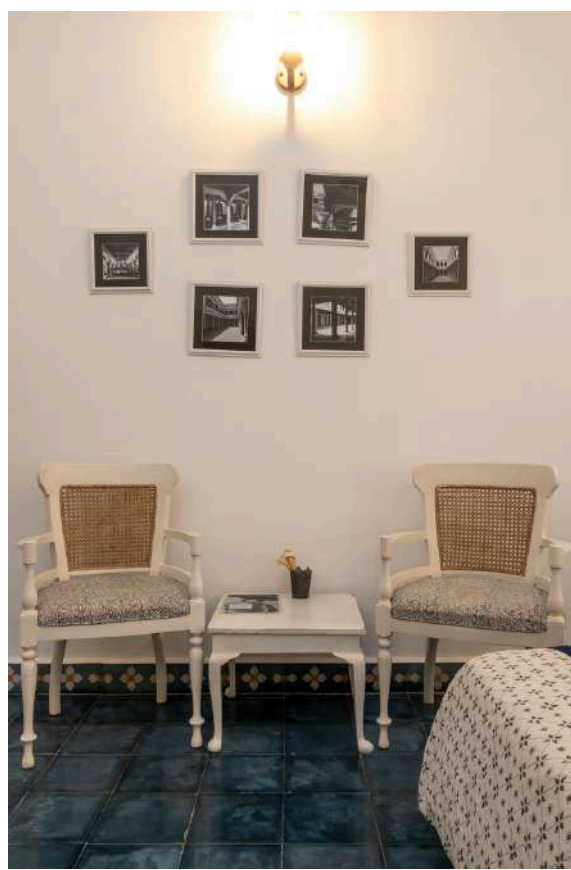
- Each room accommodates up to 3 adults or 2 adults + 1 child (under 12).
- For 3 adults, an extra bed will be provided at an additional cost.
- One child under 6 years can stay in their parents' room with an extra bed at no charge.
- Price shown is for the entire stay and includes Wi-Fi and breakfast.

PRICE: ₹7500 PER NIGHT FOR DOUBLE OCCUPANCY  
EXTRA ADULT ₹3000 PER NIGHT (WITH BREAKFAST)  
EXCLUSIVE OF TAX.



## PATIENCE – THE ROOM OF TIME

This room is about opening to thoughts and emotions.  
When we truly feel—our gut, our intuition—we step closer to truth.  
Let this space remind you that feeling is not weakness, but clarity.



### STAY DETAILS

- Each room accommodates up to 3 adults or 2 adults + 1 child (under 12).
- For 3 adults, an extra bed will be provided at an additional cost.
- One child under 6 years can stay in their parents' room with an extra bed at no charge.
- Price shown is for the entire stay and includes Wi-Fi and breakfast.

PRICE: ₹7500 PER NIGHT FOR DOUBLE OCCUPANCY  
EXTRA ADULT ₹3000 PER NIGHT  
EXCLUSIVE OF TAX.



# JOY – THE ROOM OF LIGHTNESS

Joy is not something you seek — it comes uninvited when the self is quiet.” – J. Krishnamurti  
This room reminds you that true joy is simple, unbound, and found in just being.



## STAY DETAILS

- Each room accommodates up to 3 adults or 2 adults + 1 child (under 12).
- For 3 adults, an extra bed will be provided at an additional cost.
- One child under 6 years can stay in their parents’ room with an extra bed at no charge.
- Price shown is for the entire stay and includes Wi-Fi and breakfast.

PRICE: ₹7500 PER NIGHT FOR DOUBLE OCCUPANCY  
EXTRA ADULT ₹3000 PER NIGHT  
EXCLUSIVE OF TAX.

\*This room is away from the main bungalow.





## DINING – A TABLE OF SANITY

Our dining is a place of calm and connection, where food can be felt, savored, and remembered. At this beautiful community table, conversations bloom into laughter, stories are exchanged, and every meal becomes a sharing of cultures and ideas.

### FOOD AT CREPEGINGER

In our home, food is never just food. It is care, it is conversation, it is culture. Every dish is made fresh—our oils, atta, masalas, and milk are not from packets but from the hands of local people who nurture them with love. We don't follow one cuisine—we experiment, because our guests come from many places, carrying their own tastes and memories. To us, food is a bridge: they say it can even end a war. We believe it can also open hearts. At our table, every guest is fed like family.

**All meals are available on request. Breakfast is ₹700 per person, while lunch and dinner are ₹900 per person per meal. We kindly ask that orders be placed 24 hours in advance so every dish is prepared fresh and with care.**

**Food waste** is something we cannot accept—it is unkind to the earth, to the farmer, and to the cook. So we ask you to order with mindfulness, and we promise to serve you with the same. At our dining table, may you feel nourished, not just in body, but in spirit.



# THE CIRCLE - LIVING AREA

Here, we return to ourselves.  
A space where conversations  
flow,  
laughter lingers, and silence feels  
whole.  
The Circle reminds us that life is  
not about reaching somewhere,  
but about coming back —  
to each other, to presence,  
to the memories we create  
together.





# AMENITIES

## Essentials

Towels	✓	
Toiletries	✓	
Extra Pillows and Blankets	✓	
Hanger	✓	
Irons	✓	
Clothes Drying Rack	✓	
Clothes Storage	✓	
Hair Dryer	✓	
AC		✗
Television		✗
Pool	✓	
Wifi*	✓	
Parking	✓	
Cleaning During Stay**	✓	

\* Can give trouble during bad weather | \*\* Once in two days

## Location & Activities

River Access (10 min drive)	✓	
Stream Access (within the property)	✓	
Private Entrance	✓	
Approach Road	✓	
Hiraharapura Temple (20 min drive)	✓	
Paddy Fields Access (5 min walk)	✓	
Hanging Bridge Access (10 min drive)	✓	
Books and Reading Material	✓	
Indoor Games	✓	
Cycles	✓	
Bonfire*	✓	
Picnic*	✓	
Candle Light Dinner*	✓	

\* Only on request



## HOUSE RULES AT CREPEGINGER

WELCOME TO OUR HOME IN THE FOREST. TO KEEP THE SPIRIT OF THIS PLACE ALIVE, WE INVITE YOU TO FLOW WITH A FEW SIMPLE RHYTHMS:

### ✨ ARRIVALS & DEPARTURES

CHECK-IN BEGINS AT 1:00 PM AND CHECK-OUT IS BY 10:30 AM. THESE TIMINGS HELP US PREPARE THE HOME WITH CARE FOR EACH GUEST.

### ✨ MEALS & KITCHEN HOURS

OUR KITCHEN WAKES AT 7:30 AM AND RESTS AT 10:00 PM. OUTSIDE THESE HOURS, WE LET IT STAY QUIET.

### ✨ WIFI & FOREST

WIFI IS AVAILABLE, THOUGH THE WEATHER MAY PLAY WITH ITS STRENGTH. HERE, WE BELIEVE IN MORE FOREST, LESS WIFI.

### ✨ FEET ON EARTH

NO SLIPPERS INDOORS, PLEASE. OUR ATHANGUDI TILE FLOORS ARE MEANT TO BE FELT BAREFOOT. 🌸

### ✨ WARM WATER

WE HEAT WATER WITH THE SUN. LET US KNOW IN ADVANCE IF YOU NEED IT, AND NATURE WILL DO THE REST.

### ✨ SOUND & SILENCE

NO LOUD MUSIC. LET THE BREEZE, THE BIRDS, AND YOUR OWN LAUGHTER BE THE SOUNDTRACK.

### ✨ CONSERVING ENERGY & WATER

SWITCH OFF WHAT YOU DON'T NEED. USE LAUNDRY GENTLY. SMALL ACTS KEEP THE FOREST SMILING.

### ✨ FOOD & WASTE

FOOD IS SACRED. PLEASE SHARE WITH OUR CHEF THE PORTIONS YOU WISH, SO NOTHING IS WASTED AND FOOD NOT ALLOWED INSIDE THE ROOM.

### ✨ SMOKING

NOT INSIDE THE HOME, PLEASE.

### ✨ KITCHEN ACCESS

THE KITCHEN IS THE HEART OF OUR HOME — OUR TEAM WILL SERVE YOU WITH LOVE. IF YOU NEED SOMETHING, JUST ASK.

### ✨ GROUP POLICY

WE WELCOME FAMILIES, COUPLES, AND FRIENDS — BUT ONLY GENTLEMEN GROUPS ARE NOT PERMITTED.



## A NOTE TO OUR GUESTS

CrepeGinger is not a hotel or a resort — it is our home, shared with you. To help you feel settled, here are a few things to know:

### SAFETY & SECURITY

We do not have formal security, but our team lives on the property and is always around to support you. For added peace of mind, we also have CCTV cameras.

### OUR DOGS

We share our space with dogs who are part of our family. They bring warmth and joy, and we hope you'll enjoy their company too.

### OUR TEAM

We run CrepeGinger with a small but dedicated team. They are not hotel staff, but people who help us keep this home alive. Sometimes there may be small glitches, but everything is handled with care.

### COMMUNICATION

Our staff can communicate in Hindi, and our manager can assist you in Hindi, English, and Kannada.

### RESPECT & CARE

We deeply value our staff — they are like family to us. We kindly request that you treat them with the same warmth and respect.

### LAYOUT OF THE HOUSE

- The property has six rooms in total.
- Four rooms are located in a single bungalow with a shared living area.
- The other two rooms are set slightly away from the bungalow, designed as a private unit for those who prefer more seclusion.

### WE HAVE TWO DINING SPACES:

- Guests who book the bungalow will enjoy meals at the community table, where conversations and laughter are shared.
- Guests in the two-room unit will be served at our Mindful Restaurant, a quiet space to savor food and nature.

### THE PROPERTY

CrepeGinger is spread across 2 acres, surrounded by lush paddy fields and located close to the gentle Tunga River. It is a space designed for slowing down, reconnecting with nature, and creating memories.







## HOW TO REACH US

### By Flight

- Shivamogga Airport – 1 hr 20 min drive to our property.
- Mangalore Airport – 2 hrs 30 min drive to our property.

### By Train

- Trains to Shivamogga station. From there, it's about 1 hr 20 min drive to CrepeGinger.

### By Bus

- Bus to Hariharapura. From there, it's just a 20 min drive to the property.

### Transfers

We can help arrange a cab service from any of these points. Charges will apply.



## PLACES TO SEE AROUND US

The beauty of Chikmagalur lies in its hills, waterfalls, temples, and forests. Here are some nearby experiences you can explore:

- Kavishaila – 12 km: A hilltop memorial of poet Kuvempu with panoramic views.
- Thirthahalli – 26 km: A cultural town on the banks of Tunga river.
- Sringeri Temple – 28 km: The ancient seat of Adi Shankaracharya, rich in history and spirituality.
- Kundadri Hills – 33 km: A serene hilltop with Jain basadis and breathtaking sunrise points.
- Agumbe – 36 km: Known as the ‘Cherrapunji of the South’, famous for sunsets and rainforests.
- Kavaledurga – 39 km: A hill fort with trekking trails.
- Ambuthirtha – 43 km: Sacred spot where the Tunga river is believed to originate.
- Mandagadde Bird Sanctuary – 44 km: A haven for bird lovers during monsoon.
- Kodachadri Hills – 84 km: A trekker’s paradise with views of Western Ghats.
- Lion Safari – 84 km: Wildlife safari for adventure seekers.
- Arbi Falls – 84 km: A hidden waterfall amidst greenery.
- Abbigundi Falls – 21 km: A nearby refreshing cascade.
- Shakatapuram – 16 km: A spiritual retreat and temple.
- Elephant Camp – 60 km: Close encounters with elephants.
- Kudremukh – 79 km: Iconic trekking and biodiversity hotspot.





# SIRIMANE FALLS



In a world rushing ahead with speed, automation, and algorithms, I often feel something precious is being left behind—our sense of community, the joy of gathering, the art of creating together.

Everywhere I look, homes are turning into brands, stories into screens, and emotions into something shaped by machines rather than human hands. I don't want to lose that essence of being human—connection, craft, and care. For me, art is not a luxury. It's the language of life. Every handmade detail, every woven thread, every shared meal holds within it the warmth of someone's presence, the touch of love, the story of a life lived with care.

What I dream of is simple—to nurture spaces where people can slow down, reconnect with themselves, with each other, and with the arts. A place where creativity is not consumed like a product, but lived and felt. A place where belonging matters more than branding.

I believe the future is not just about what we create, but about what we choose to protect—our humanity, our art, our stories.

This is what Crepeginger is to me. Not a brand, not a business, but a home. A home for the human spirit.



**WITH LOVE  
SUBA.**



## PAYMENT TERMS & CANCELLATION POLICY

- Advance Payment: We require 50% of the total booking amount at the time of confirming your stay.
- Non-Refundable: All bookings are non-refundable.
- Credit Note: In case of cancellation, we will issue a credit note valid for 3 months from the date of cancellation, which can be adjusted against your next booking.
- Payment Options: Payments can be made via GPay or direct bank transfer.

## PRICING POLICY

Our prices are thoughtfully set to reflect the care, effort, and quality we put into your stay. **We do not offer discounts** — what you see is the final price. This helps us maintain fairness for all our guests and support the livelihoods of our team.

## Taxes

As per government regulations, applicable taxes are mandatory and cannot be waived.

TO BOOK YOUR GETAWAY AT CREPE GINGER

**WHATSAPP: +91 9343866175**

**EMAIL: THECREPEGINGER@GMAIL.COM**

**INSTAGRAM: @CREPEGINGERGETAWAY**

**WWW.CREPEGINGER.COM**

